

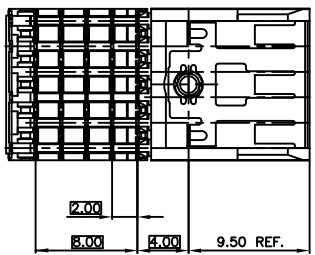
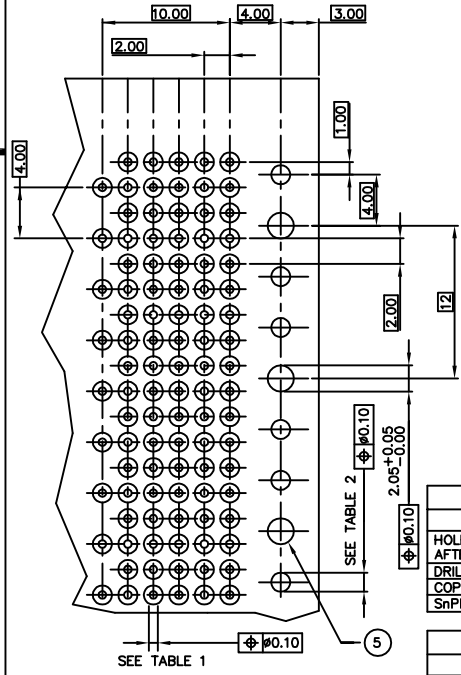
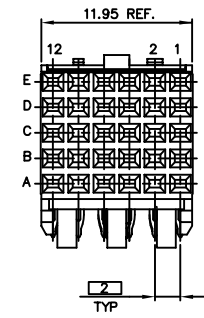
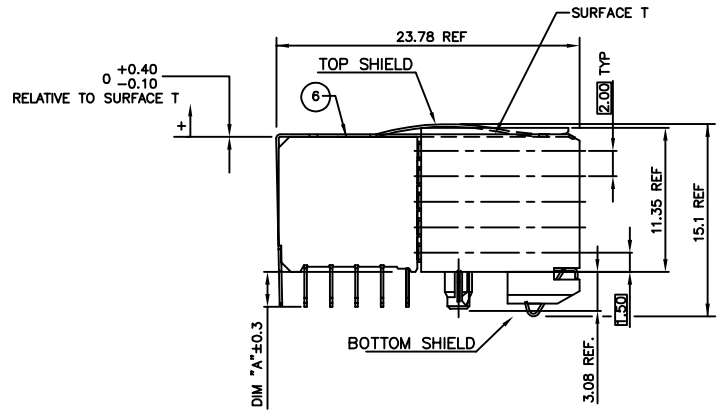
Tous droits strictement réservés. Reproduction ou communication a des tiers interdite sous quelque forme que ce soit sans autorisation écrite du propriétaire. Propriété de c FCI. Droits de reproduction FCI.



All rights strictly reserved. Reproduction or issue to third parties in any form whatever is not permitted without written authority from the proprietor. Property of FCI. Copyright FCI.

PRODUCT NO.	P.C.B. THICKNESS	DIM "A"
85847-X02	1.6	2.90
85847-X12	2.4	3.53
85847-X02LF	1.6	2.90
85847-X12LF	2.4	3.53

PLATING CONTACT AREA:	
DASH NR:	PERFORMANCE LEVEL
-1YY	TELCORDIA CO
-2YY	CUSTOMER SPECIAL
-3YY	CUSTOMER SPECIAL
-9YY	TELCORDIA CO
-1YYLF	TELCORDIA CO
-2YYLF	CUSTOMER SPECIAL
-3YYLF	CUSTOMER SPECIAL
-9YYLF	TELCORDIA CO



NOTES:

- CONNECTOR MATERIALS:  
HOUSING: LCP, 30% GLASS FILLED, UL 94-V0 COMPLIANT  
TERMINAL: PHOSPHOR BRONZE ALLOY  
SHIELD: PHOSPHOR BRONZE ALLOY
- PLATING ON PRESS-FIT TAIL:  
85847-XY: 0.5-1.5 μm SnPb  
85847-XYLF: 0.5-1.5 μm Sn (LEAD FREE)
- PRODUCT SPECIFICATION:  
GS-12-002
- APPLICATION SPECIFICATIONS:  
TA-941
- INDICATED HOLES ARE UNPLATED.
- TOP SURFACE OF PRESS BLOCK MAY EXTEND UP TO 0.4MM HIGHER THAN HOUSING. THIS MAY AFFECT THE TAIL LENGTH BEFORE APPLICATION TO A BOARD.
- THESE PRODUCTS WHERE THE PART NUMBER ENDS IN "LF" MEET THE EUROPEAN UNION DIRECTIVES AND OTHER COUNTRY REGULATIONS AS DESCRIBED IN GS-22-008.  
  
ALL PRODUCTS WILL WITHSTAND EXPOSURE TO 240° FOR 60 SECONDS IN A CONVECTION, INFRA-RED OR VAPOR PHASE REFLOW OVEN.
- FOR LEAD FREE PART NUMBERS ADD "LF" SUFFIX. EXAMPLE: 85847-X02LF

RECOMMENDED PC BOARD LAYOUT, COMPONENT SIDE.  
SEE PRINT 58351 FOR ADDITIONAL PCB INFORMATION

HOLE DIAMETER AFTER PLATING	0.65-0.80
DRILLED HOLE	0.81-0.86 (0.85 DRILL)
COPPER PLATING	0.025 - 0.05
SnPb PLATING	0.005-0.015

HOLE DIAMETER AFTER PLATING	1.50-1.60
DRILLED HOLE	1.63-1.66
COPPER PLATING	0.025 - 0.050
SnPb PLATING	0.005-0.015

mat'l. code		tolerances unless otherwise specified		CUSTOMER COPY	www.fciconnect.com title B SERIES R/A SIGNAL RECEPT ASSY 5 ROW, 1 MOD, PF product family METRAL (tm) size dwg no code 213
SEE NOTE 1		.X ±.3	.XX ±.10	projection	
ltr	ecn no	dr	date	linear	
P	DG07-0169	Cenh	05/15/07	angles	
J	V10166	GNY	7/9/01	dr	
K	V12205	CGD	10/2/01	enr	
L	V20669	CGD	4/17/02	chr	
M	V03-0722	LP	8/22/03	appd	
N	V05-0545	DAI	07/12/05		scale 1:1
sheet index	revision sheet	P	1		

cage code  
22526

ACAD

PDM: Rev:P

STATUS: Released

Printed: Dec 17, 2007